

Piso 1
 Desenho de vigas
 Concreto: C25, em geral
 Aço: CA-50-A e CA-60-B
 Escala seções: 1:20

Resumo Aço Vigas	Comp. total (m)	Peso+10% (kg)	Total
CA-50-A Ø10	327.3	226	226
CA-60-B Ø5	495.9	86	86
Total			312

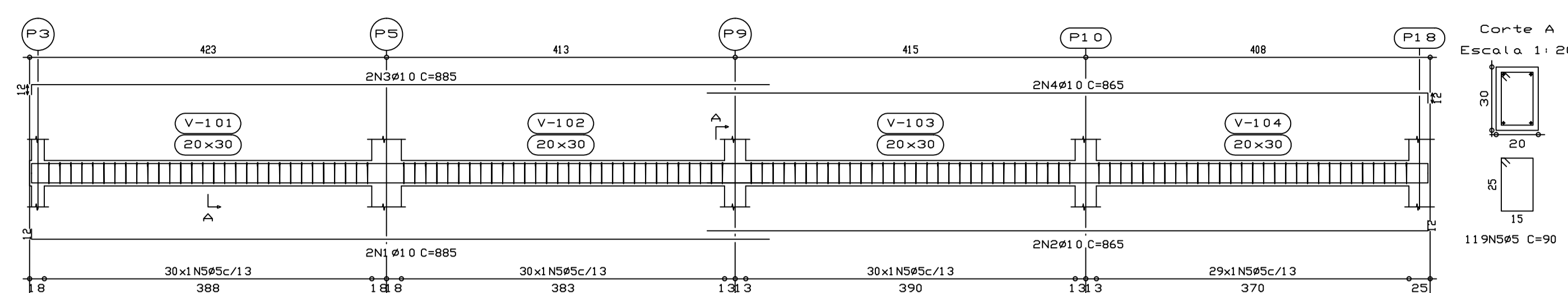
Aço	Pos.	Di	am.	Q.	Comp. (cm)	Total (cm)
CA-50-A	1	Ø10	4	70	280	280
CA-50-A	2	Ø10	4	92	368	368
CA-60-B	3	Ø5	4	82	328	328

Resumo Aço Piso 1 Pilares	Comp. total (m)	Peso+10% (kg)	Total
CA-50-A Ø10	6.5	4	4
CA-60-B Ø5	3.3	1	1
Total			5

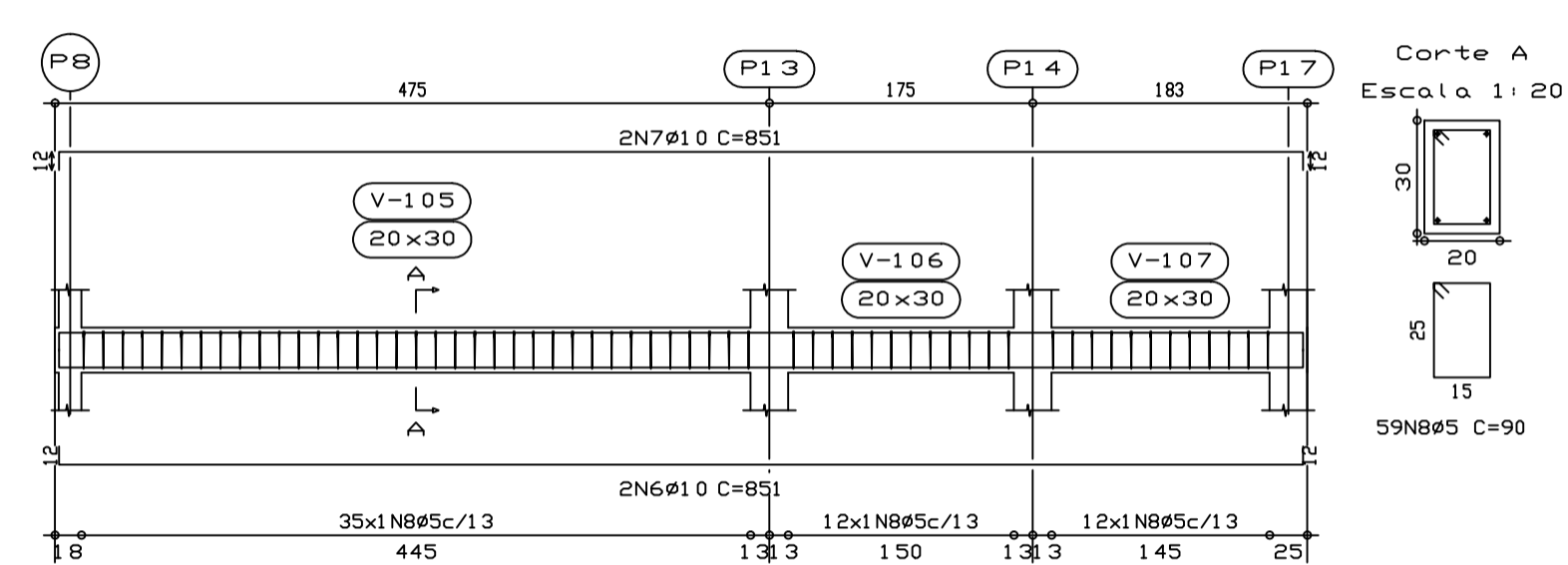
Pilares que terminam em Piso 1
 Concreto: C25, em geral
 Aço: CA-50-A e CA-60-B
 Escala: 1:50

Elemento	Pos.	Di	am.	Q.	Dob (cm)	Refo (cm)	Dolo (cm)	Comp (cm)	Total (cm)	CA-50-A (kg)	CA-60-B (kg)
V 1	1	Ø10	2	12	873	12	885	1770	11.1		
	2	Ø10	2	12	853	12	865	1730	10.9		
	3	Ø10	2	12	873	12	885	1770	11.1		
	4	Ø10	2	12	853	12	865	1730	10.9		
	5	Ø5	11	9				90	10710		16.8
									Total+10%	48.4	18.5
V 2	6	Ø10	2	12	827	12	851	1702	10.7		
	7	Ø10	2	12	827	12	851	1702	10.7		
	8	Ø5	59					90	5310		8.3
									Total+10%	23.5	9.1
V 3	9	Ø10	2	12	362	12	386	772	4.8		
	10	Ø10	2	12	362	12	386	772	4.8		
	11	Ø5	25					90	2250		3.9
									Total+10%	10.6	3.9
V 4	12	Ø10	4	12	858	12	870	3480	21.9		
	13	Ø10	4	12	858	12	870	3480	21.9		
	14	Ø5	119					90	10710		16.8
										Total+10%	48.2
V 5	15	Ø10	2	12	605	12	629	1258	7.9		
	16	Ø10	2	12	605	12	629	1258	7.9		
	17	Ø5	42					90	3780		5.9
									Total+10%	17.4	6.5
V 6	18	Ø10	2	12	605	12	629	1258	7.9		
	19	Ø10	2	12	605	12	629	1258	7.9		
	20	Ø5	45					90	3600		5.7
									Total+10%	17.4	6.3
V 7	21	Ø10	2	12	605	12	629	1258	7.9		
	22	Ø10	2	12	605	12	629	1258	7.9		
	23	Ø5	41					90	3690		5.8
									Total+10%	17.4	6.4
V 10	24	Ø10	2	12	605	12	629	1258	7.9		
	25	Ø10	2	12	605	12	629	1258	7.9		
	26	Ø5	43					90	3870		6.1
									Total+10%	17.4	6.7
V 8	27	Ø10	2	12	605	12	629	1258	7.9		
	28	Ø10	2	12	605	12	629	1258	7.9		
	29	Ø5	43					90	3870		6.1
									Total+10%	17.4	6.7
V 9	30	Ø10	2	12	286	12	310	620	3.9		
	31	Ø10	2	12	286	12	310	620	3.9		
	32	Ø5	20					90	1800		2.8
									Total+10%	8.6	3.1
									Ø5:	0.0	85.7
									Ø10:	226.3	0.0
									Total:	226.3	85.7

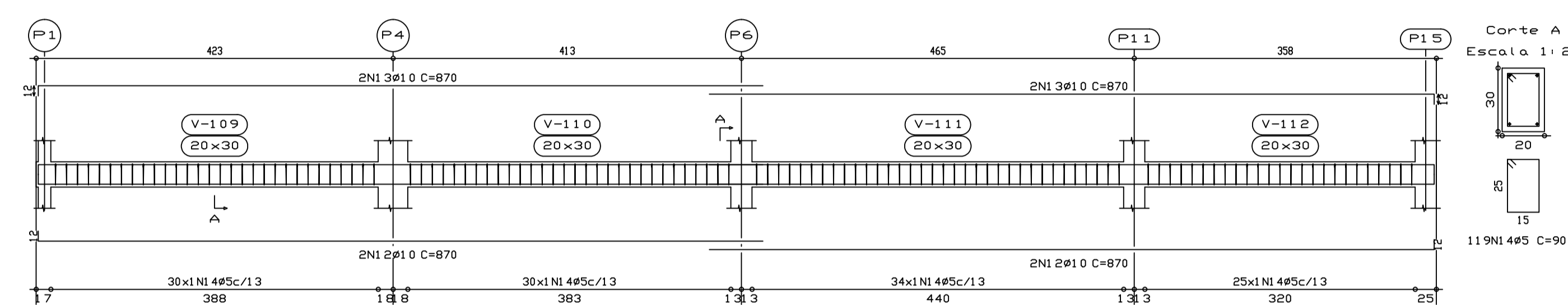
V 1
 Escala 1:50



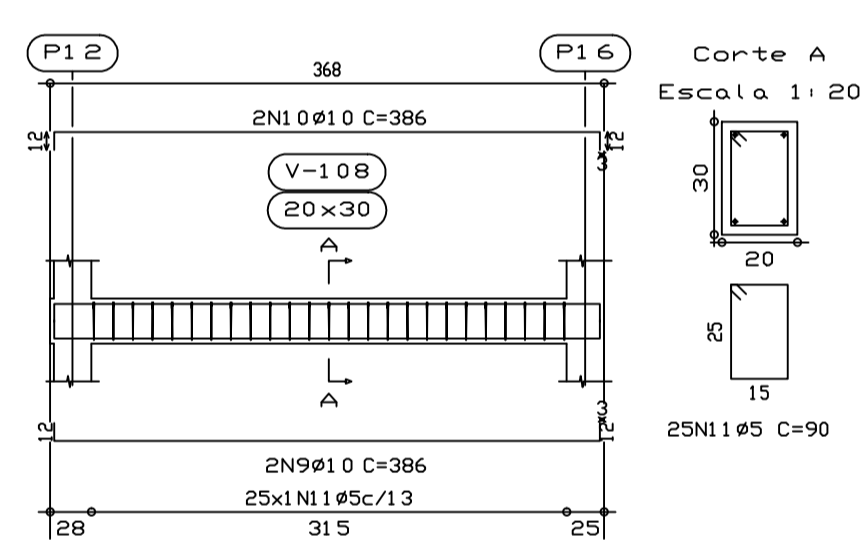
V 2
 Escala 1:50



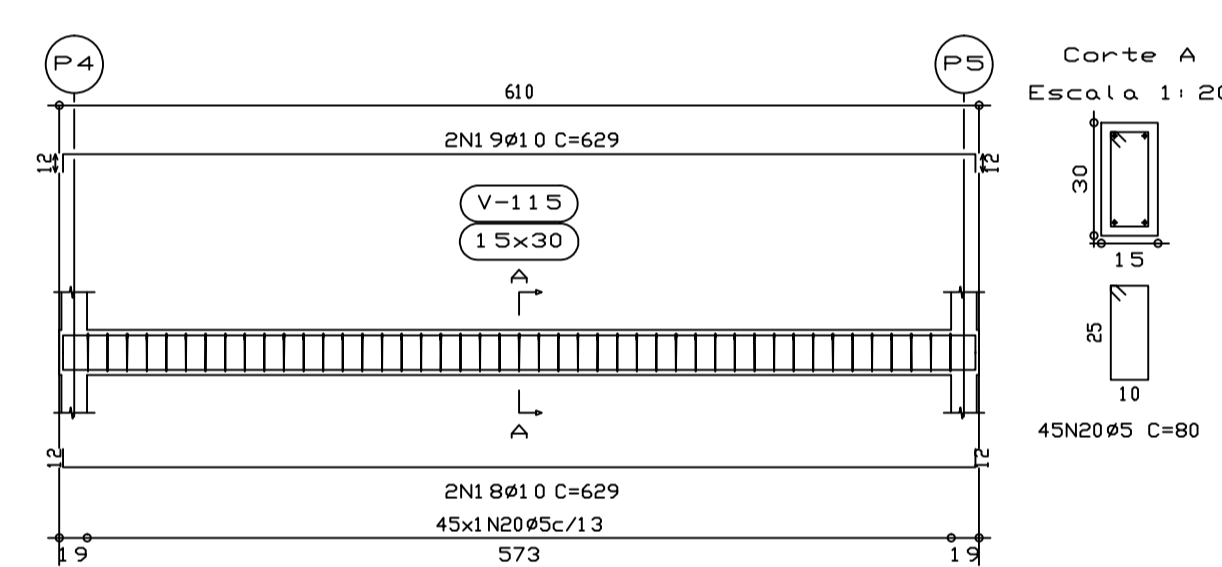
V 4
 Escala 1:50



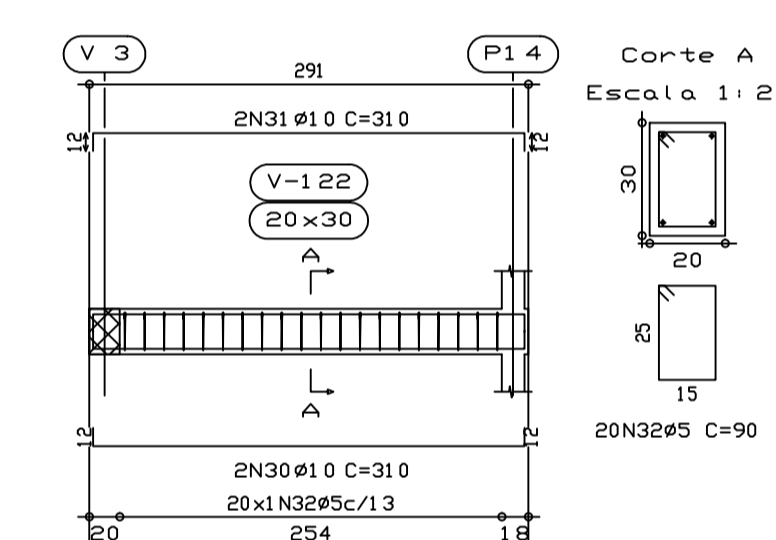
V 3
 Escala 1:50



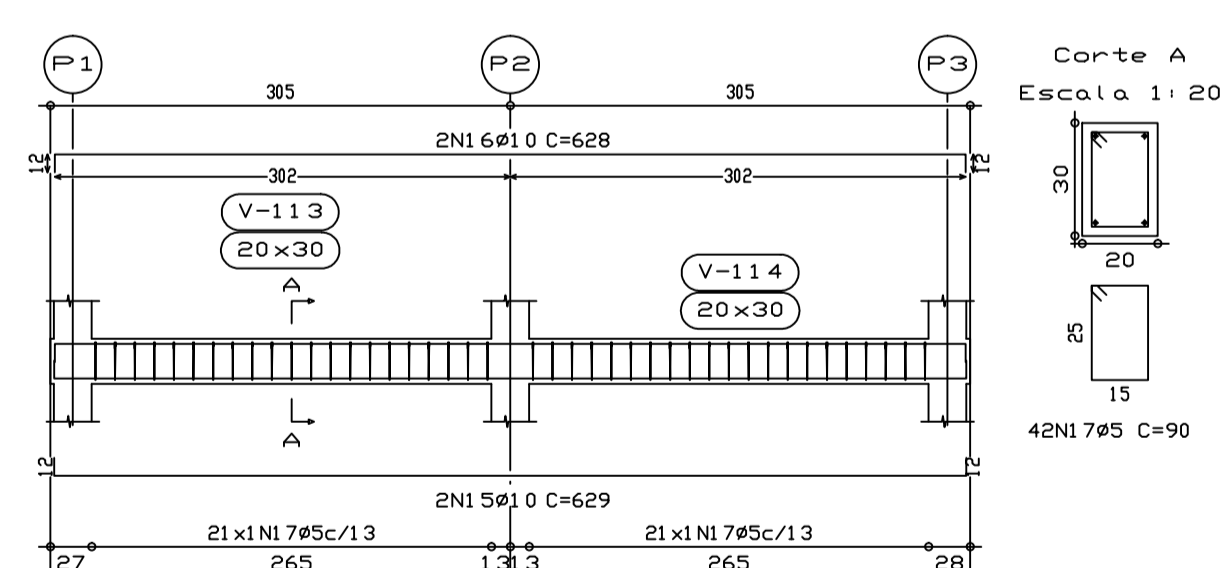
V 6
 Escala 1:50



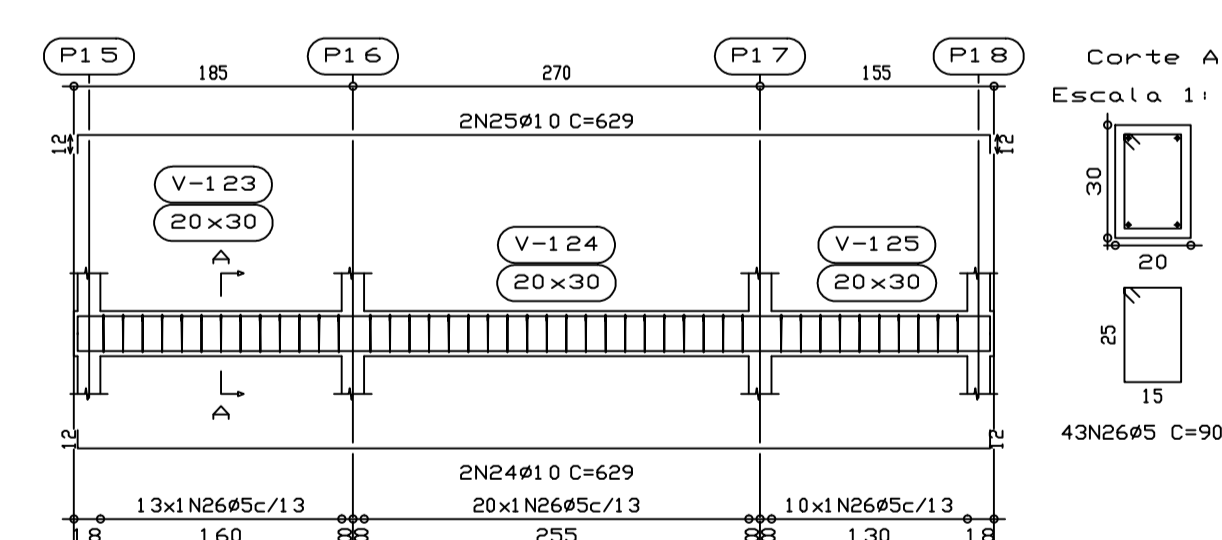
V 9
 Escala 1:50



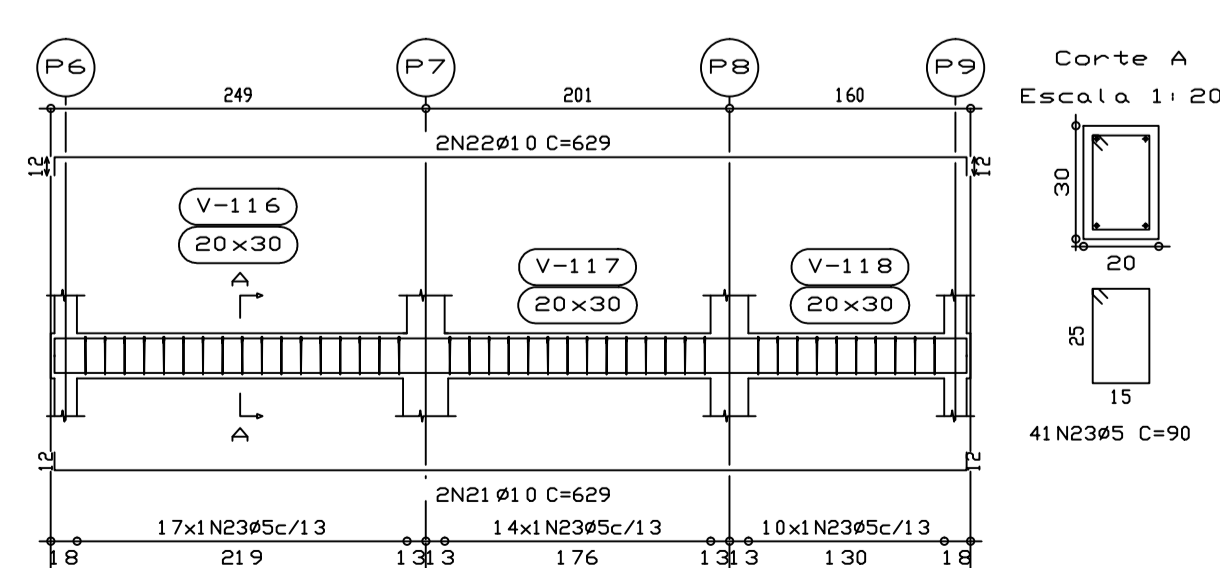
V 5
 Escala 1:50



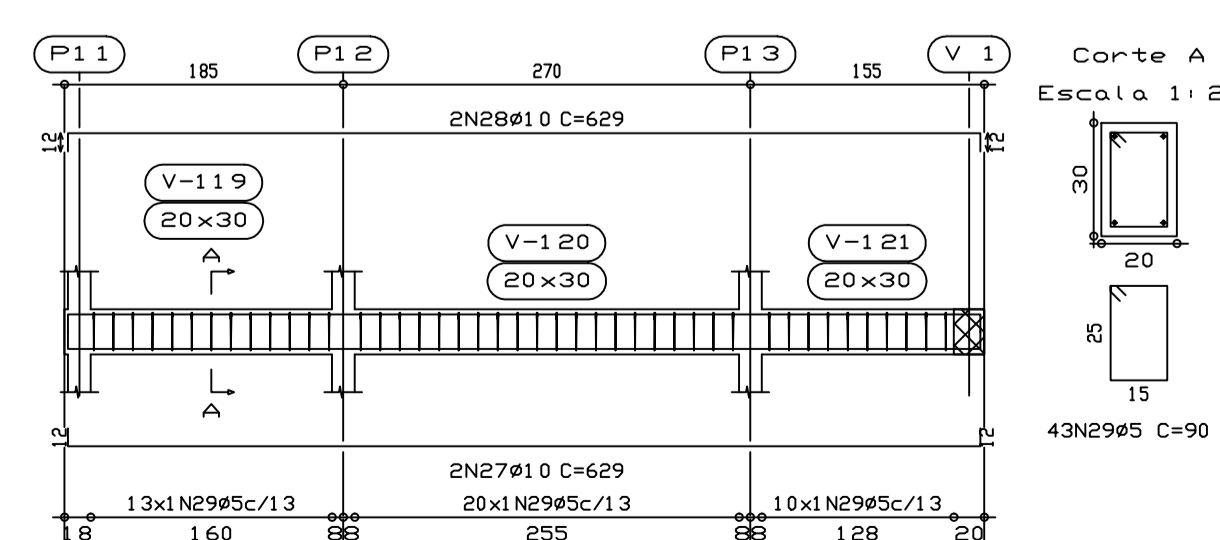
V 10
 Escala 1:50



V 7
 Escala 1:50



V 8
 Escala 1:50



Projeto:	AMPLIAÇÃO DA SECRETARIA DE MEIO AMBIENTE	Data:	28/06/2023
Local:	RUA MARINHO CAETANO LEAL		
Nome:			
	Planta:		
	PROJETO ESTRUTURAL		
Autor:	ALLAN FELIPE DA SILVA PEREIRA	Des. nº:	02/06